



OFFERS IN THE REGION OF

**£500,000**

**Nutbrook Street**

London, SE15 4LE

**GARETH**  
**JAMES**



## PROPERTY SUMMARY

One-bedroom apartment with private south-east facing garden on one of Peckham's most desirable roads.

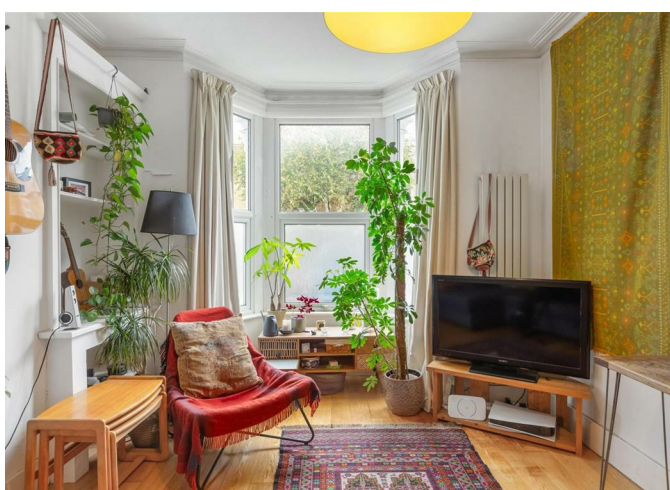
1



1



1













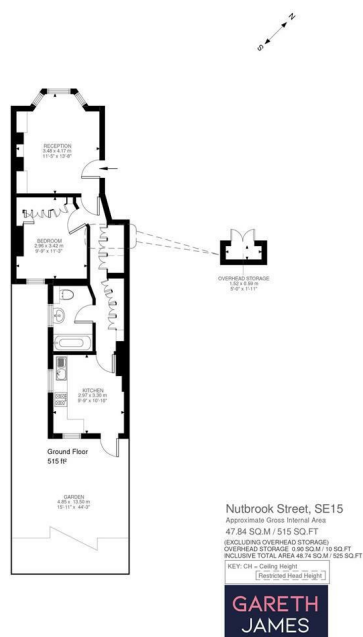
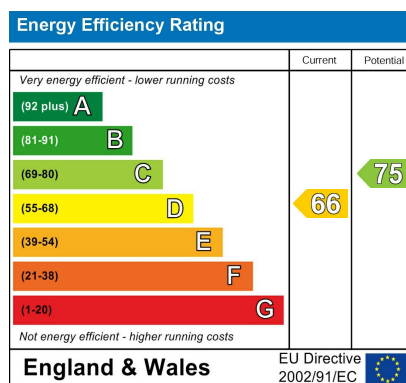


Illustration for identification purposes only. Not to scale.  
Floor Plan Drawn According To RICS Guidelines.



Agents Note: Whilst every care has been taken to prepare these particulars, they are for guidance purposes only. All measurements are approximate and are for general guidance purposes only and whilst every care has been taken to ensure their accuracy, they should not be relied upon and potential buyers/tenants are advised to recheck the measurements

**GARETH**  
**JAMES**

**OFFICE ADDRESS**  
129 Bellenden Road  
London  
SE15 4QY

**OFFICE DETAILS**  
02077324330  
sales@garethjames.com  
<https://www.garethjames.com/>